

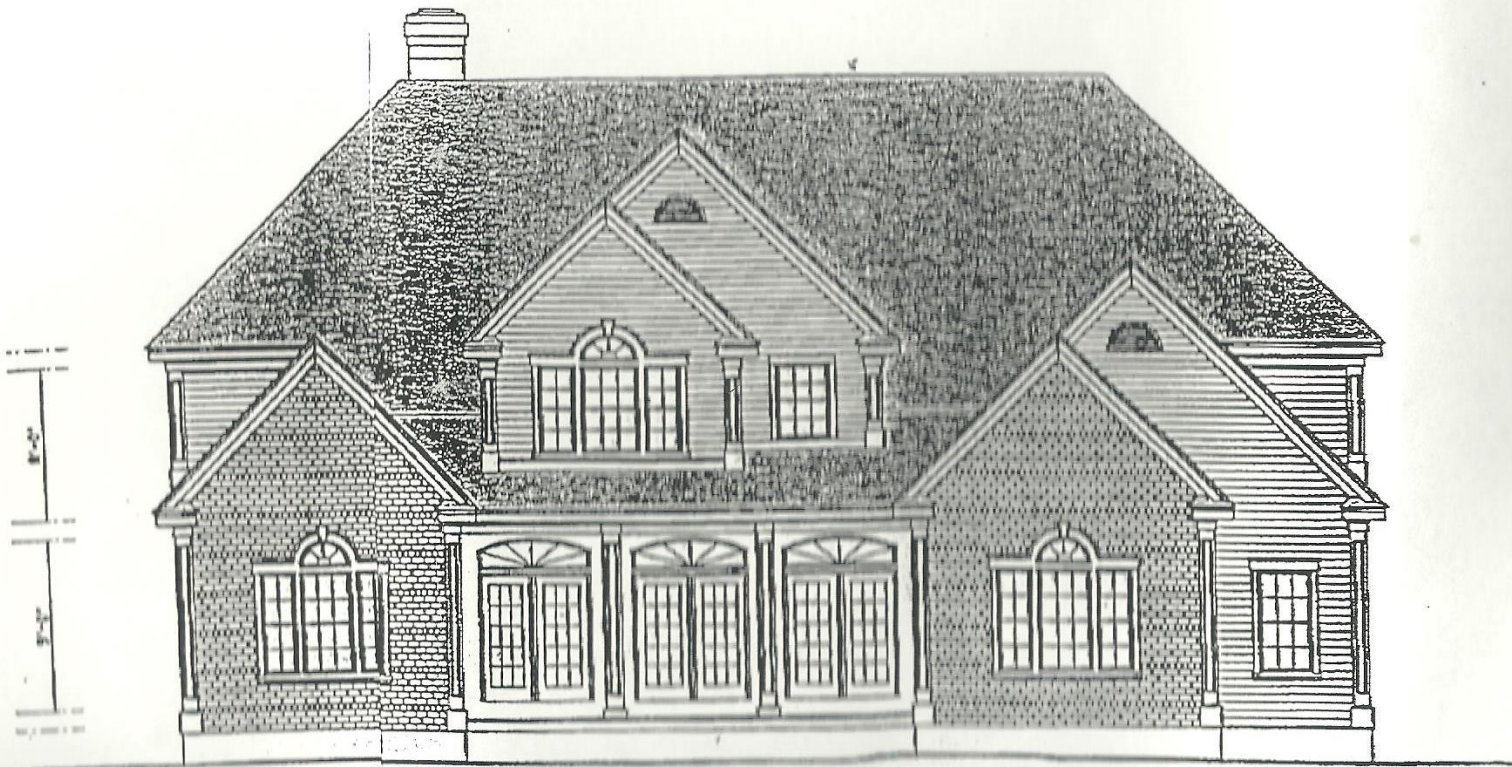
Left-Side Elevation  
SCALE: 1/8" = 1'0"



Rear Elevation  
SCALE: 1/8" = 1'0"



Right-Side Elevation  
SCALE: 1/8" = 1'0"



Front Elevation  
SCALE: 1/4" = 1'0"

HANDRAILS HAVING A MINIMUM OF 30 INCHES AND 38 INCHES VERTICALLY FROM THE SHALL BE PROVIDED ON AT BRWAYS OF THREE OR MORE

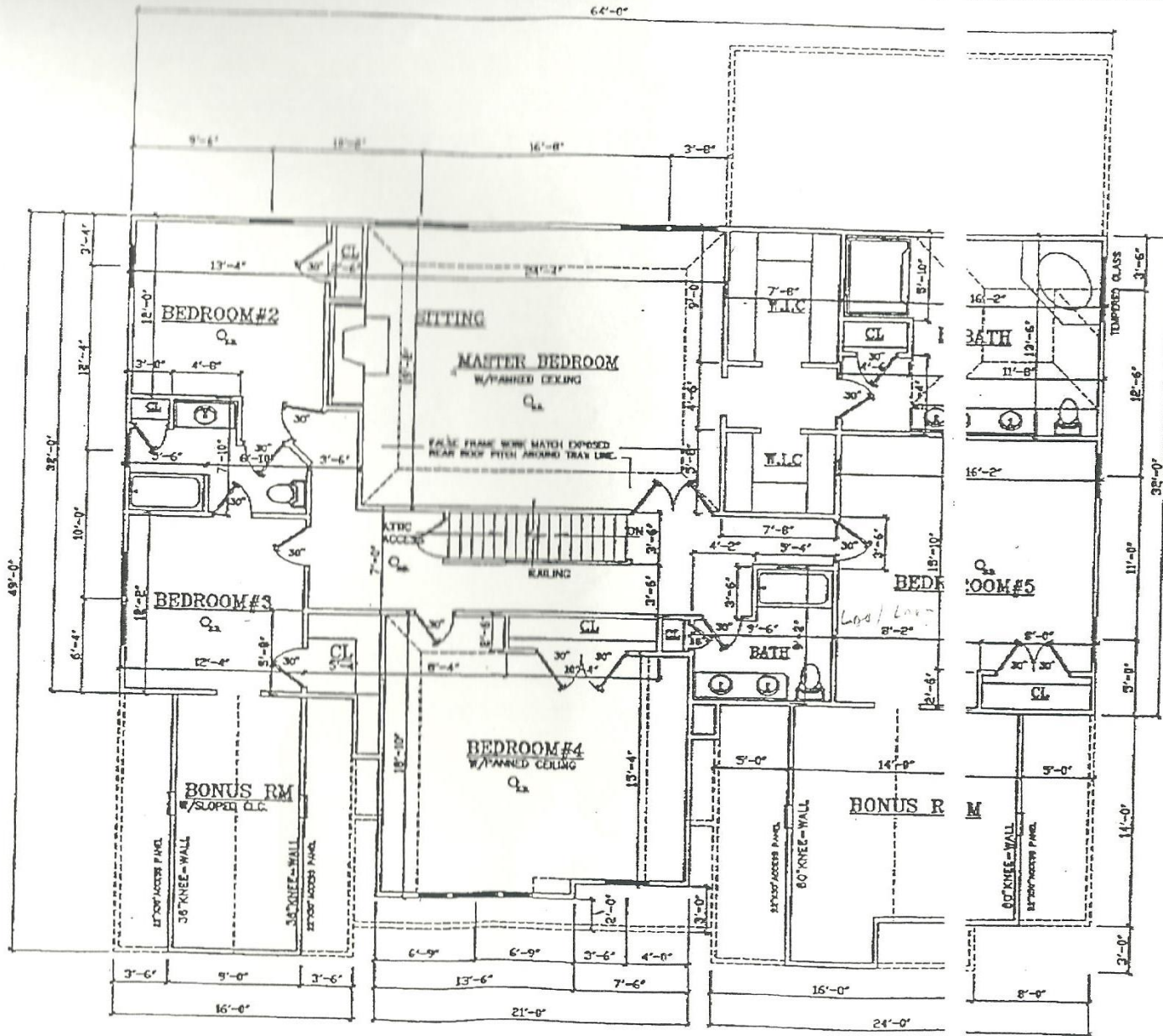
THE SIZE HANDRAILS SHALL BE CROSS SECTION WITH A RADIUS TO 3 INCHES, OR A NON RADIUS WITH A PERIMETER DIMENSION BUT NOT MORE THAN 6 1/4 CROSS SECTION DIMENSION BONES, EDGED SHALL HAVE A RADIUS

RAISED PORCHES, BALCONIES, SURFACES LOCATED MORE THAN ONE FLOOR OR GRADE BELOW SHALL NOT BE LESS THAN 36 INCHES IN CLEARANCE WITH A TOTAL RISE OF MORE THAN ONE FLOOR OR GRADE SHALL HAVE HANDRAILS WHICH SHALL ALSO BE NOT LESS THAN 34 INCHES IN CLEARANCE FROM THE NOSING OF

FINISH LIMITATIONS: OPEN SIDES OF STAIRWAYS, STAIRS AND RAISED FLOOR SHALL HAVE HANDRAILS, BALUSTERS WHICH PREVENT THE FALL OF PERSONS MORE THAN 36 INCHES OR MORE IN

1. HANDRAIL FOUR-8X4 INCH BRICK OR METAL  
2. SPACED ARE BASED ON NO. 2 GRADE

DOORS MAY BE ELABORATED FOR DOUBLE HOLLOW CORE DOORS WITH 800-FOOT EMBLEMATIC BRACK AND ROOF LOCK.



1'-0"	1'-0"	1'-0"
4'-0"	4'-0"	4'-0"
6'-0"	6'-0"	6'-0"
8'-0"	8'-0"	8'-0"
10'-0"	10'-0"	10'-0"

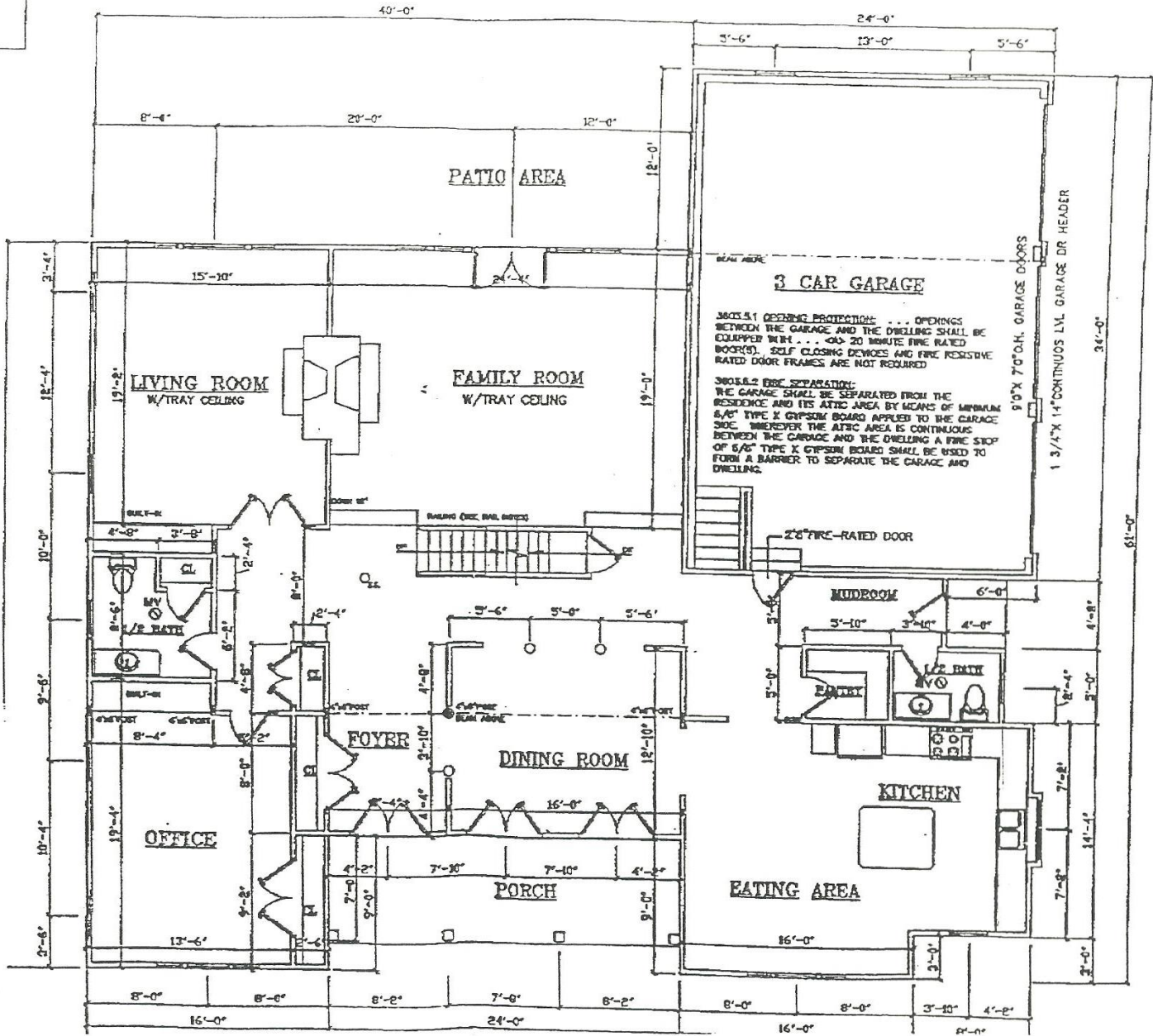
EXCEPTED FOR DOUBLE MEMBERS  
 80-POUND TEMPORARY FLOOR AND ROOF LOADS

PORCHES, BALCONIES,  
 OR LOCATED MORE  
 OR OR GRADE BELOW  
 36 INCHES IN  
 WITH A TOTAL RISE OF  
 THE FLOOR OR GRADE  
 WHICH SHALL ALSO  
 THAN 34 INCHES IN  
 FROM THE NOSING OF

**LIMITATIONS:**  
 SIDES OF STAIRWAYS,  
 3 RAISED FLOOR  
 E RAILS, BALUSTERS  
 1 PREVENT THE  
 ES OR MORE IN

ES HAVING A MINIMUM  
 ES AND 38 INCHES  
 LLY FROM THE  
 PROVIDED ON AT  
 THREE OR MORE

HANDRAILS SHALL  
 SECTION WITH A  
 INCHES, OR A NON  
 PERIMETER DIMENSION  
 MORE THAN 6 1/4  
 SECTION DIMENSION  
 ES SHALL HAVE A



**3005.5.1 OPENING PROTECTION:** . . . OPENINGS  
 BETWEEN THE GARAGE AND THE DWELLING SHALL BE  
 EQUIPPED WITH . . . (A) 20 MINUTE FIRE RATED  
 DOOR(S). . . SELF CLOSING DEVICES AND FIRE RESISTIVE  
 RATED DOOR FRAMES ARE NOT REQUIRED

**3005.5.2 FIRE SEPARATION:**  
 THE GARAGE SHALL BE SEPARATED FROM THE  
 RESIDENCE AND ITS ATTIC AREA BY MEANS OF MINIMUM  
 5/8\" TYPE X GYPSUM BOARD APPLIED TO THE GARAGE  
 SIDE. WHEREVER THE ATTIC AREA IS CONTIGUOUS  
 BETWEEN THE GARAGE AND THE DWELLING A FIRE STOP  
 OF 5/8\" TYPE X GYPSUM BOARD SHALL BE USED TO  
 FORM A BARRIER TO SEPARATE THE GARAGE AND  
 DWELLING.

ALL WORK SHALL BE DONE IN ACCORDANCE WITH THE LATEST EDITIONS OF THE INTERNATIONAL RESIDENTIAL CODE BOOKS AND THE 2003 INTERNATIONAL BUILDING CODES. THE CONTRACTOR SHALL BE RESPONSIBLE FOR OBTAINING ALL NECESSARY PERMITS AND INSURANCE.

**O'LEARY RESIDENCE**  
 PROJECT NO. 100-100-100  
 DATE: OCTOBER 2010

**Michael J. Konosky Associates**